

CHAUNCEY APARTMENTS
RENTAL PRICES EFFECTIVE 10/1/2019

	<u>Floor Plan</u>	<u>Number of Units</u>	<u>Square Footage</u>	<u>Price</u>
<u>1 Bedroom & 1 Bath</u>				
Bay Window Unit	1-A	10	720	\$815
Regular Window Unit	1-B	3	700	\$815
Regular Window Unit	1-C	3	720	\$815
Regular Window Unit	1-D	3	720	\$815
<u>1 Bedroom w/Small Den and 1 Bath</u>				
Bay Window Unit	1D-F	2	800	\$860
<u>1 Bedroom w/Large Den and 1 Bath</u>				
Bay Window Unit	1D-A&D	11	950	\$930
Regular Window Unit	1D-B	6	935	\$930
Bump-Out Den Unit	1D-C	15	885	\$930
2 BR - Bay Window	2-A	1	960	\$930
<u>2 Bedroom Handicap Unit with 2 Baths</u>				
Bay Window Unit	2-B	3	1,000	\$980
<u>Corner Units</u>				
1 BR Den 1 Bath NW Bay	1D-E	3	1,020	\$965
1 BR Den 1 Bath NE Bay	1D-G	2	1,020	\$965
2 BR 2 Baths NW/SW Bay	2-E	7	1,010	\$990
Same as above w/Porch	2-F	2	1,010	\$1000
2 BR 2 Baths NE Regular	2-H	2	1,030	\$1000
2 BR 2 Baths SE Bay	2-G	3	1,060	\$1015
<u>2 Bedrooms w/Den & 1 Bath</u>				
Bay Window Unit	2D-A	2	1,045	\$1010
<u>3 Bedroom w/2 Baths</u>				
Bay Window Unit SE	3-A	3	1,210	\$1,085

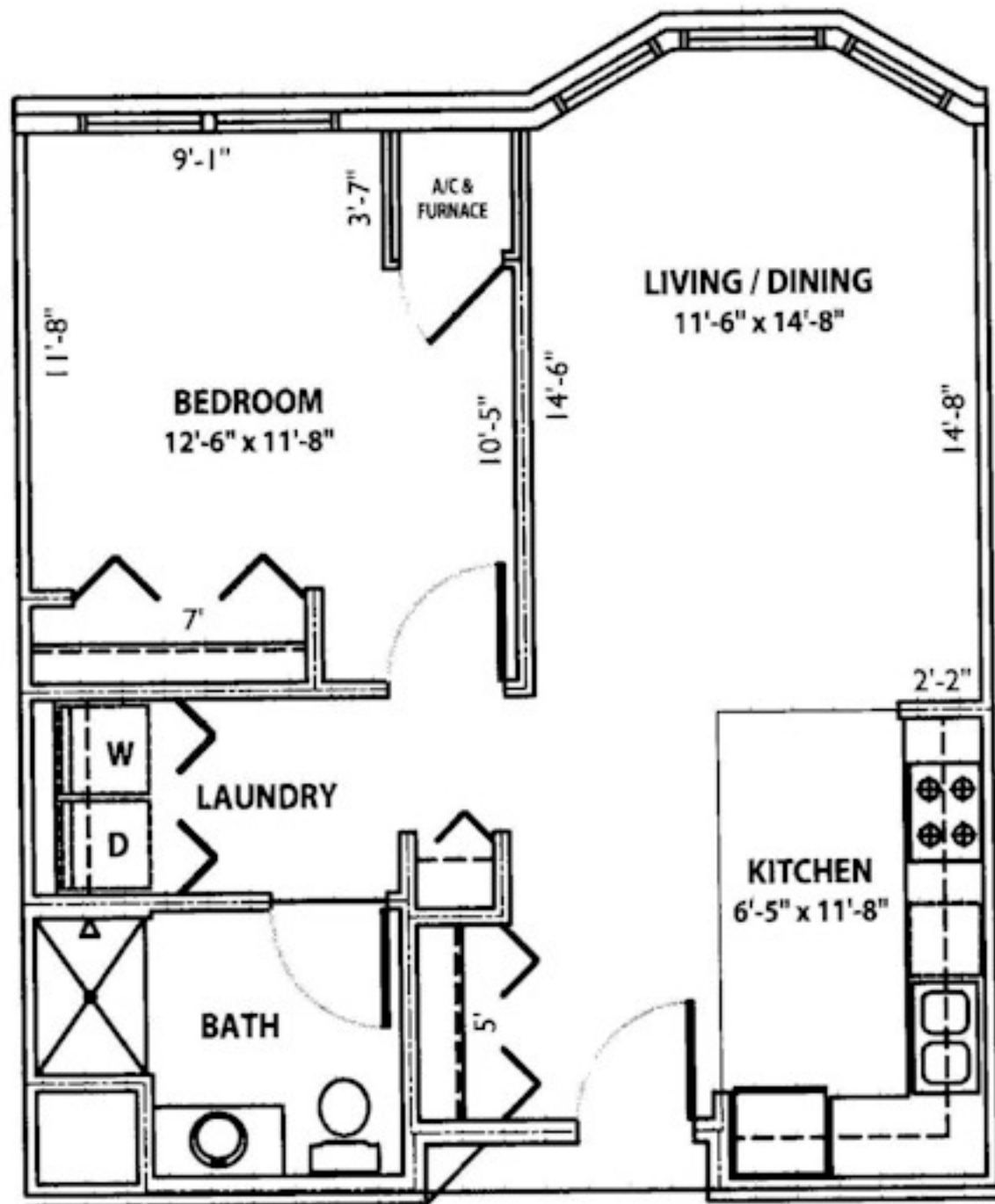
Rent Includes: Heat, Water, Sewer, Garbage, Recycling, Underground Parking and Satellite TV Service.

Rent Does NOT Include: Electricity, Phone & Internet.
(Wireless internet is available in the Community Room at no cost).

1-A

1 Bedroom with 1 Bath (720 Sq. Ft)

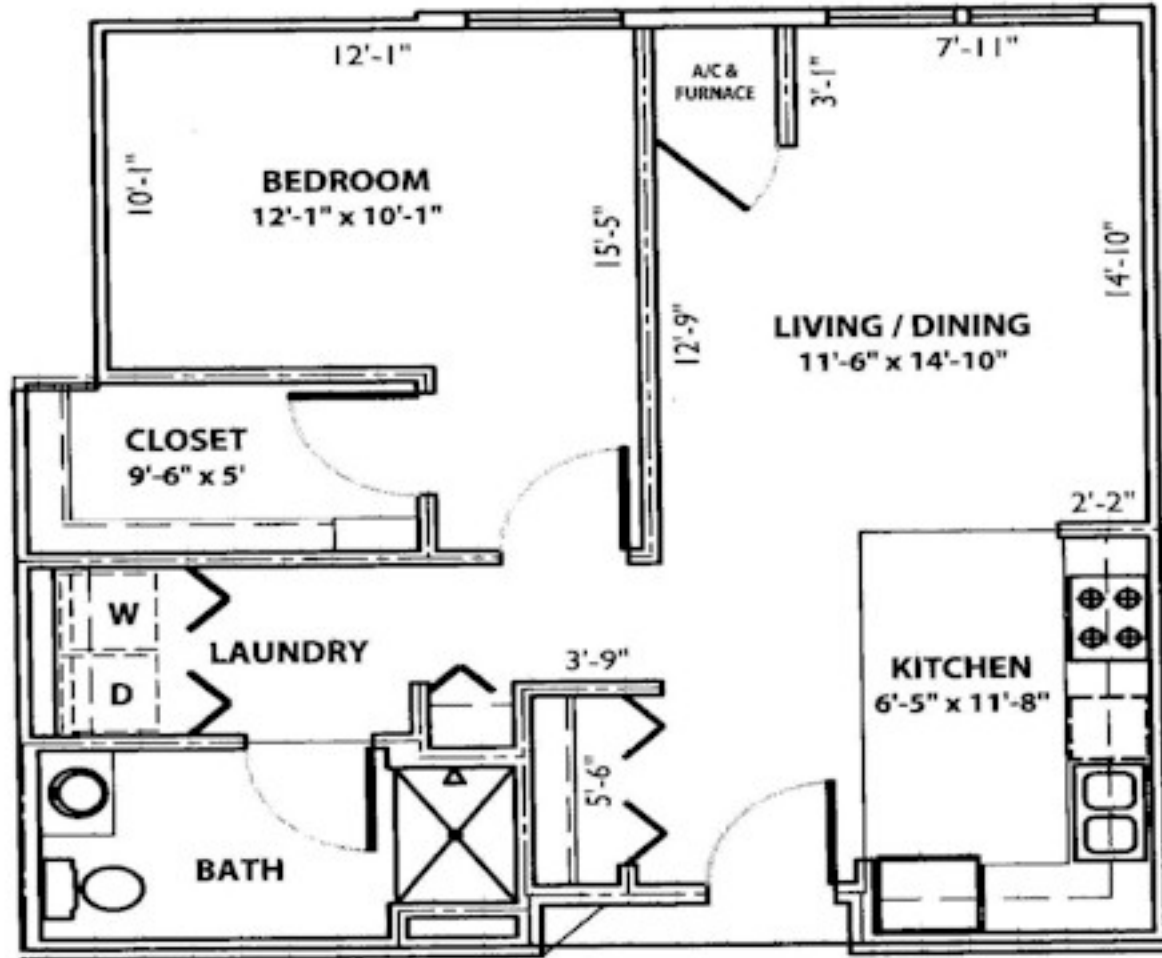
1-B (700 Sq. Ft) is the same as 1-A except the windows in the living room are standard and not bay windows.

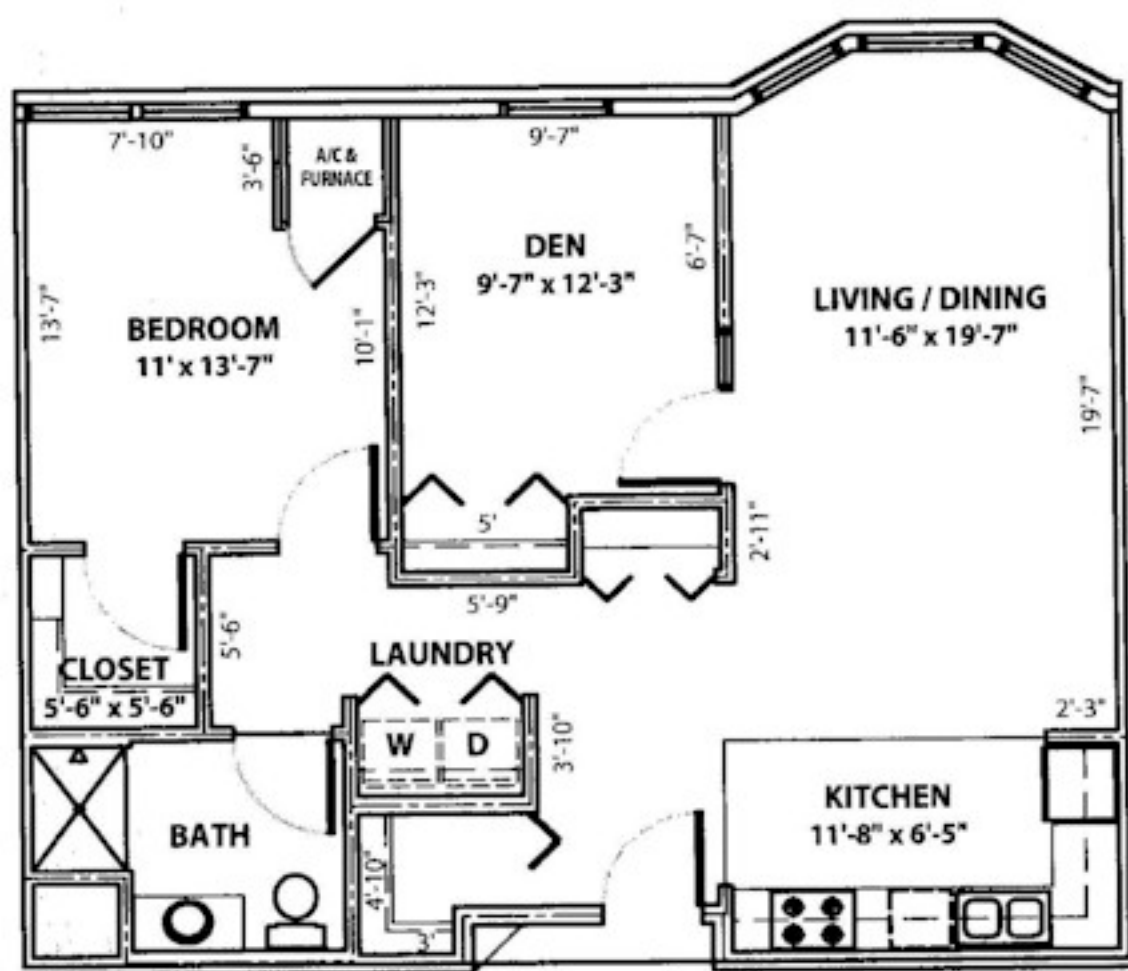


1-C

1 Bedroom with 1 Bath (720 Sq. Ft)

1-D (720 Sq. Ft) is similar to 1-C except the bathroom is laid out different and the bedroom walk-in closet is at the far end of the bedroom instead of inside the door.





1D-A

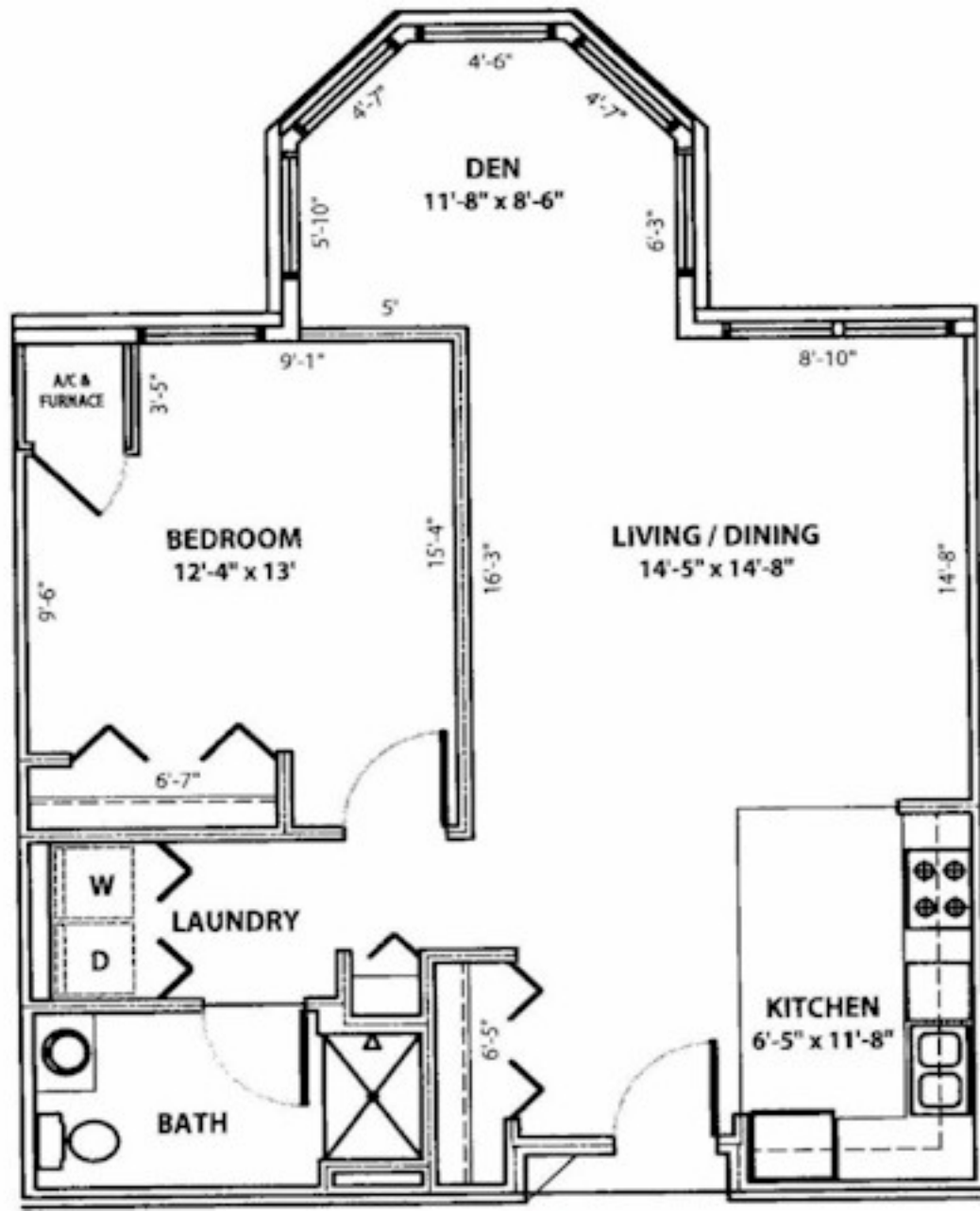
1 Bedroom with large Den and 1 Bath (950 Sq. Ft)

ID-B (935 Sq. Ft) is the same as ID-A except the windows in the living room are standard and not bay windows.

ID-D (950 Sq. Ft) is the same as ID-A except only one window is in the bedroom and the furnace is in the den.

1D-C

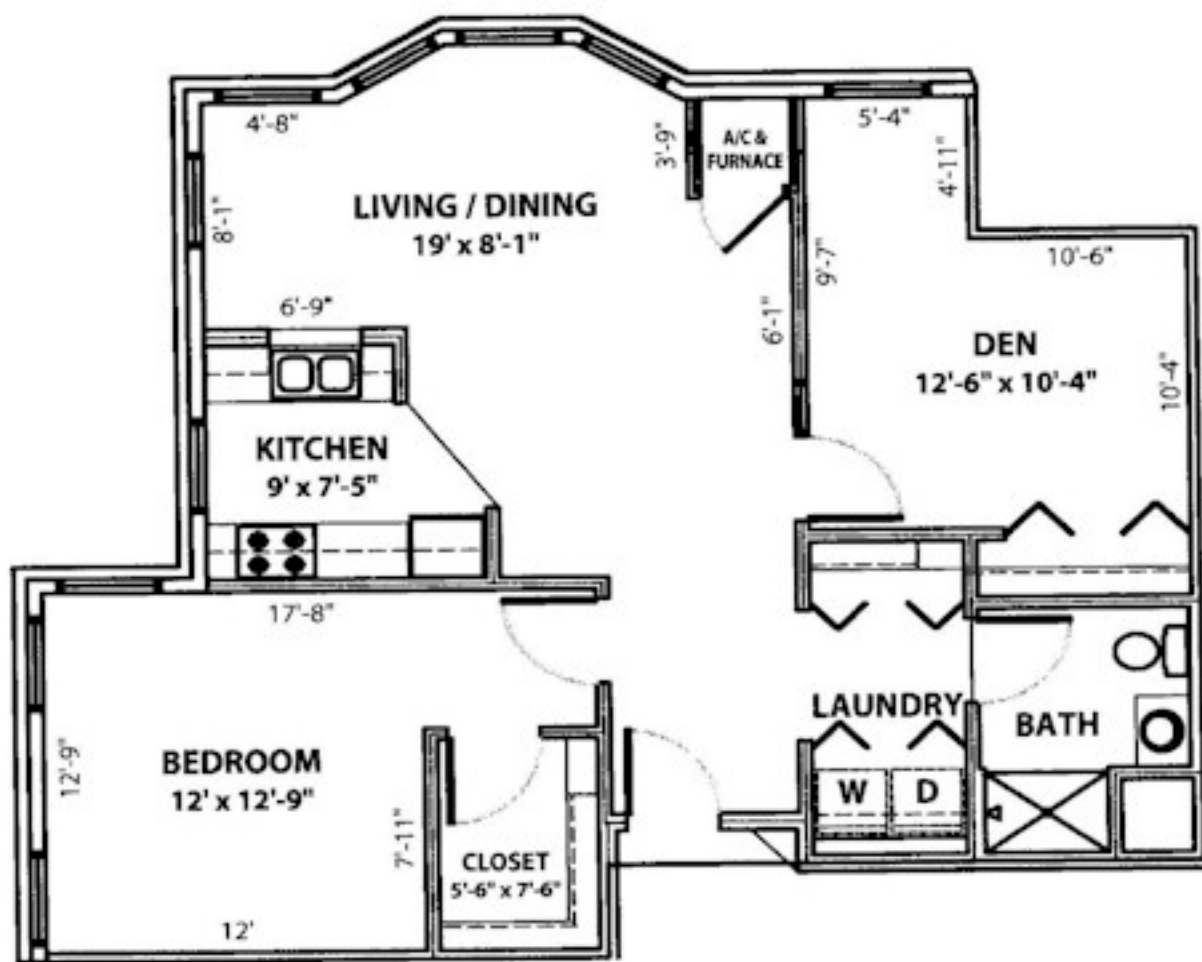
1 Bedroom with
large "bump-out"
den and 1 bath
(885 Sq. Ft)

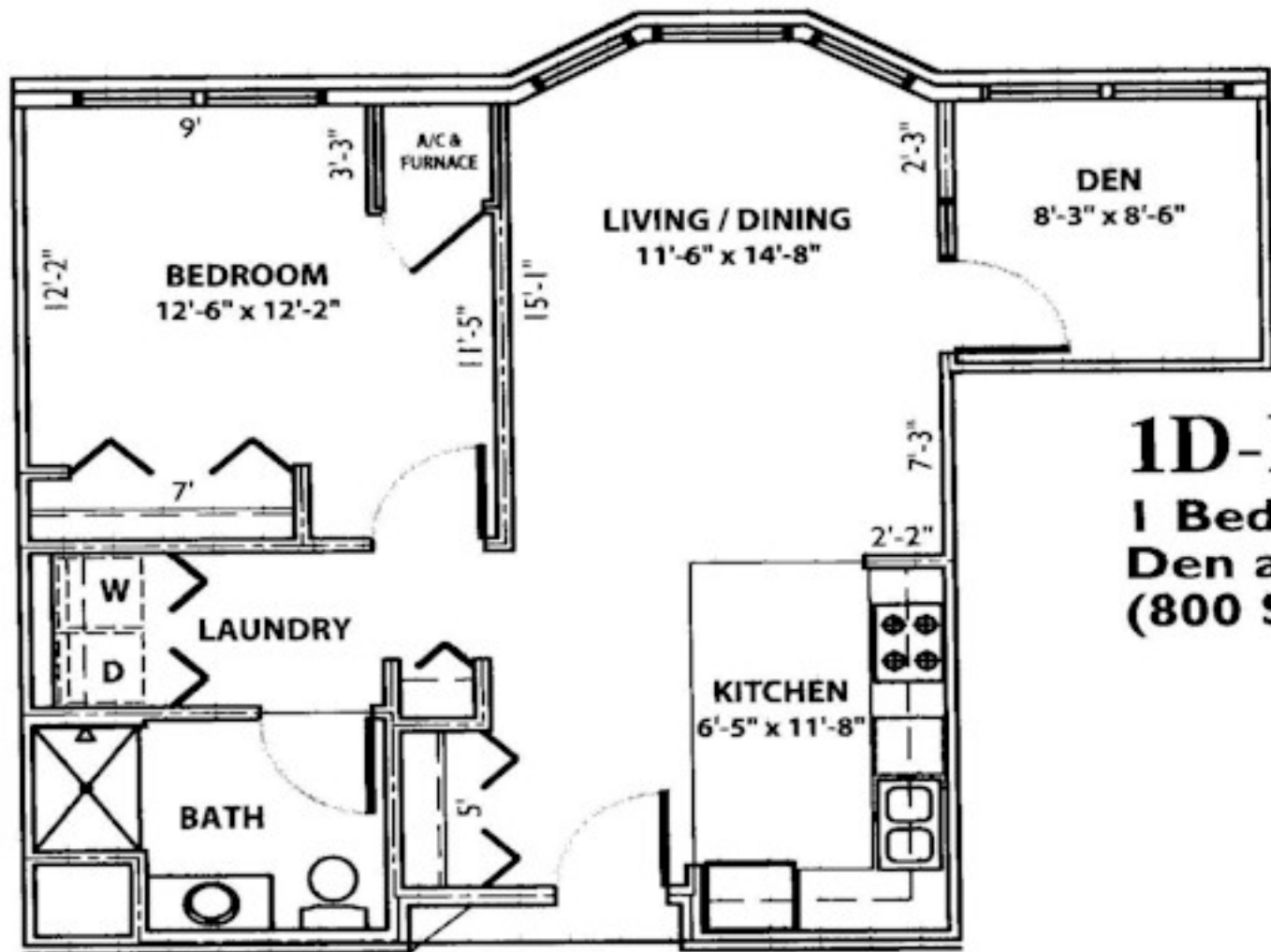


1D-E (Corner Units)

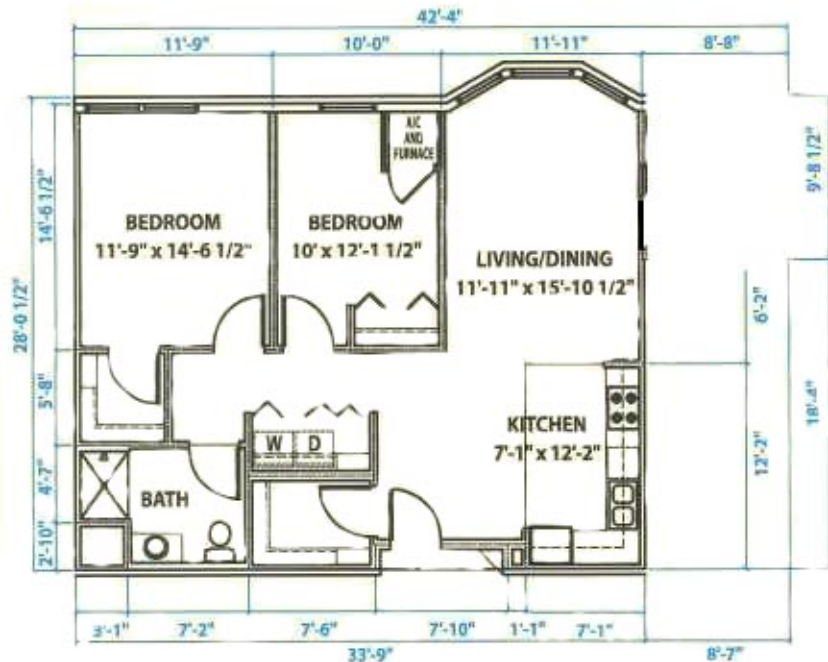
1 Bedroom with large Den and 1 Bath
(1,020 Sq. Ft)

1D-G (1,020 Sq. Ft) is the same as 1D-E except a $2\frac{1}{2}' \times 3'$ corner of the bedroom is used for a chimney chase.





1D-F
1 Bedroom with small
Den and 1 Bath
(800 Sq. Ft)



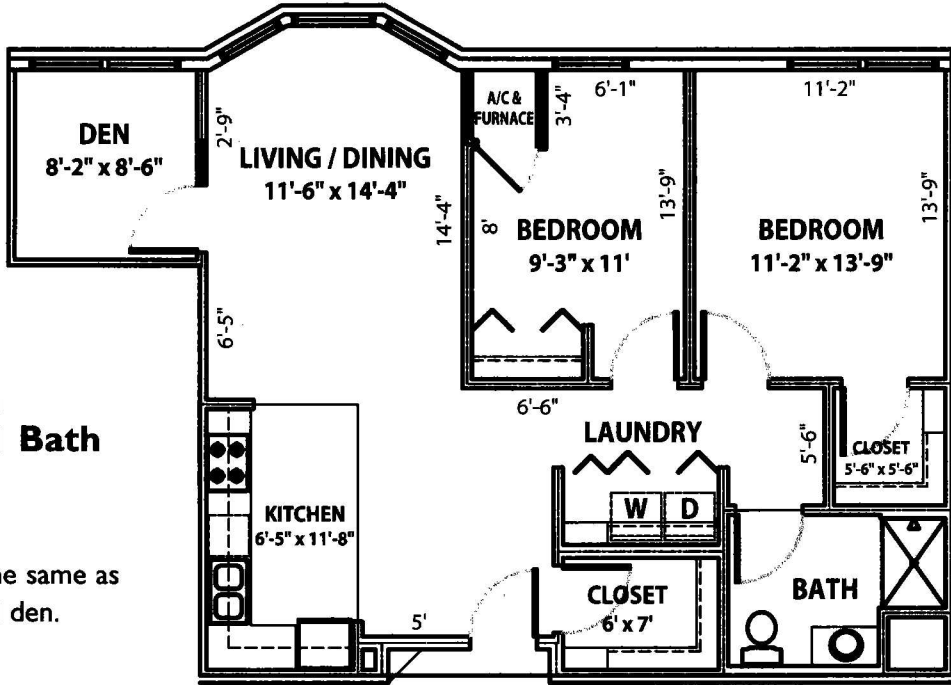
2 -A

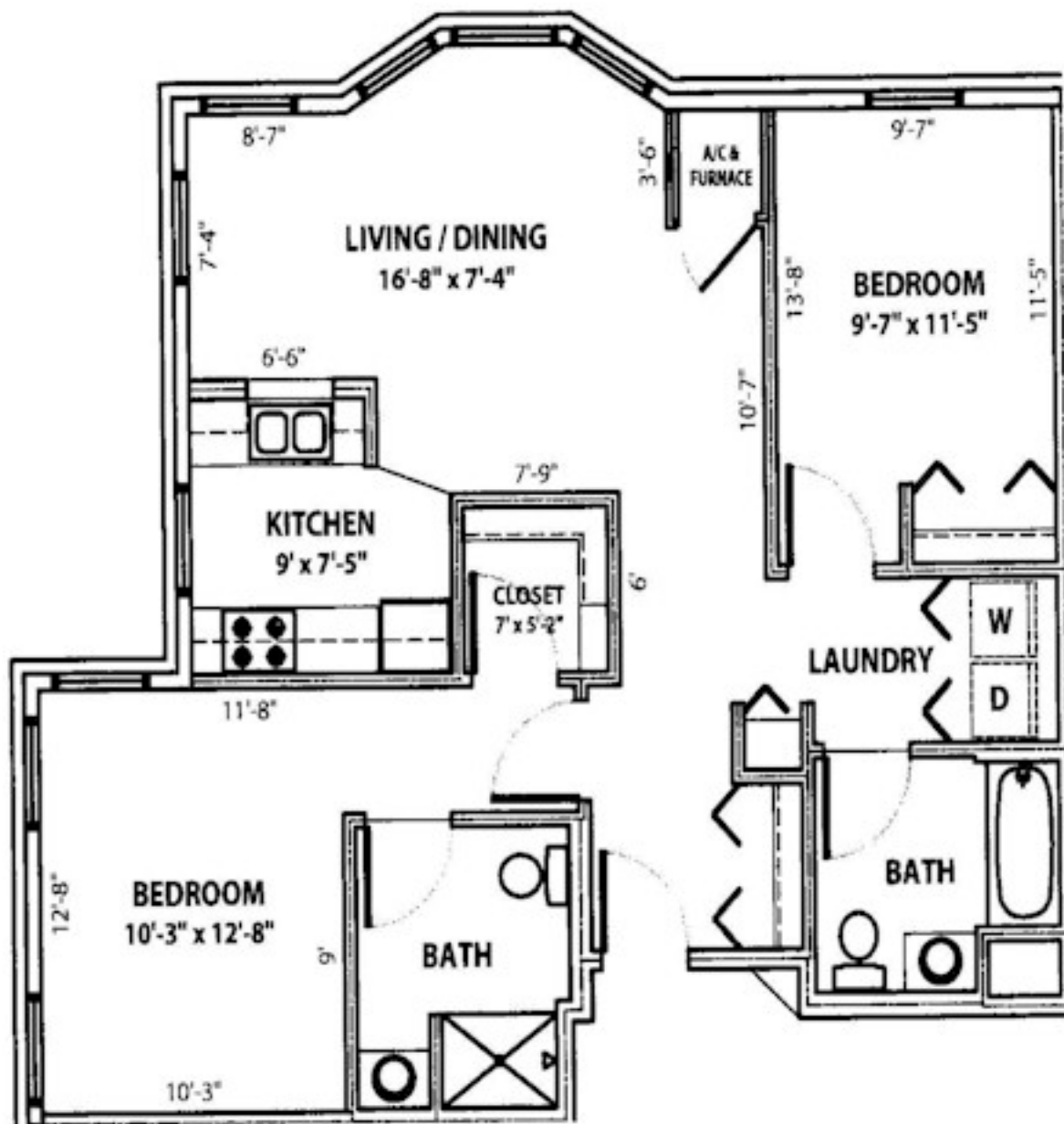
**2 Bedroom with
small Den and
1 Bath**

2D-A

**2 Bedroom with
Small Den and 1 Bath
(1,045 Sq. Ft)**

2-A (960 Sq. Ft) is the same as
2D-A without the small den.





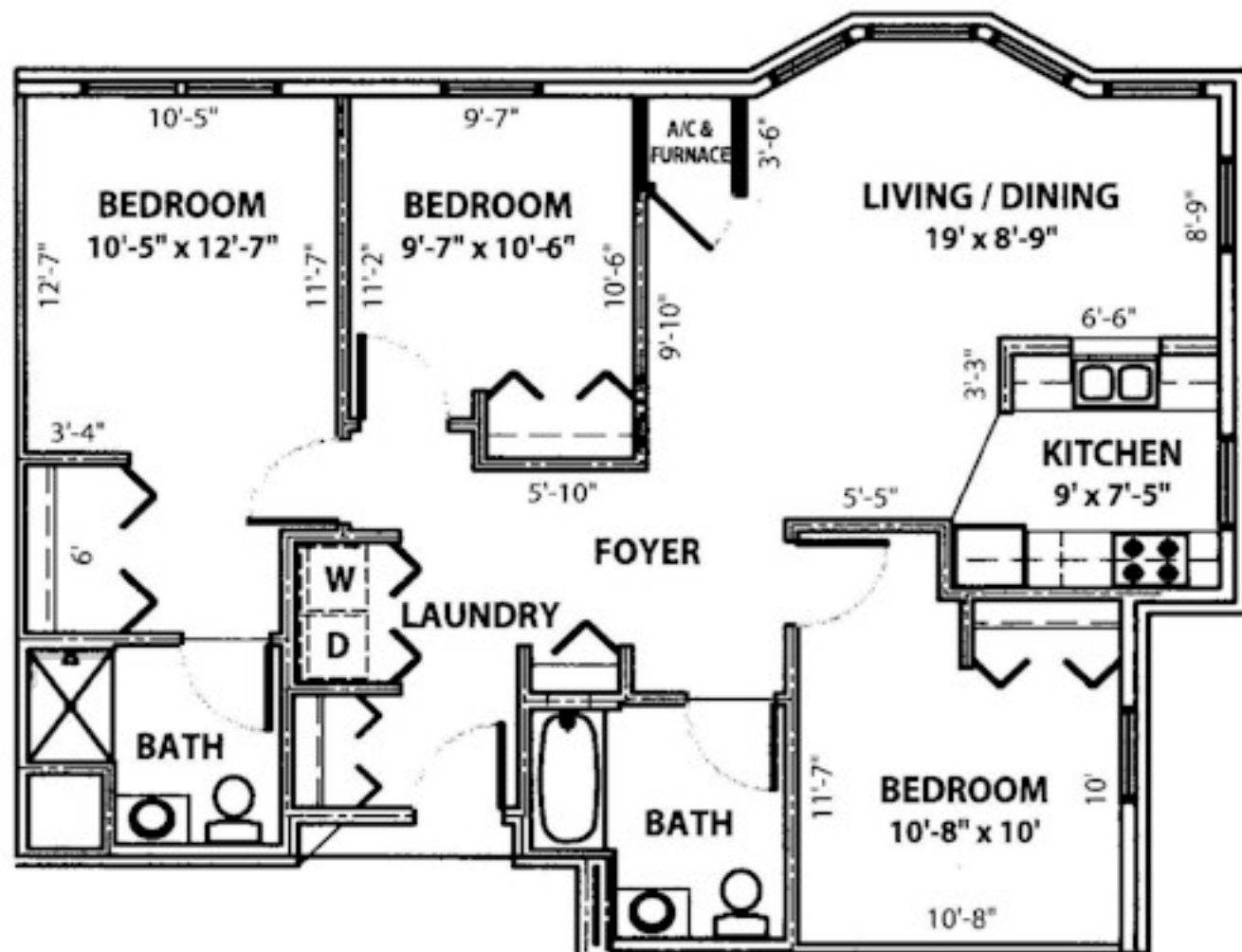
2-E (Corner Units)

**2 Bedroom
with 2 Baths
(1,010 Sq. Ft)**

2-F (1,010 Sq. Ft) is the same as 2-E plus it has a wrap around porch and a patio door off the dining area.

2-G (1,060 Sq. Ft) is similar to 2-E except the living/dining area and master bedroom are bigger.

2-H (1,030 Sq. Ft) is similar to 2-E except the living/dining area and master bedroom are bigger and the windows in the living room are standard and not bay windows.



3-A (Corner Unit)
3 Bedroom
with 2 Baths
(1,210 Sq. Ft)